

M I C H A E L . A N T H O N Y . L O M B A R D I

---

[ P O R T F O L I O ]

M

A

L

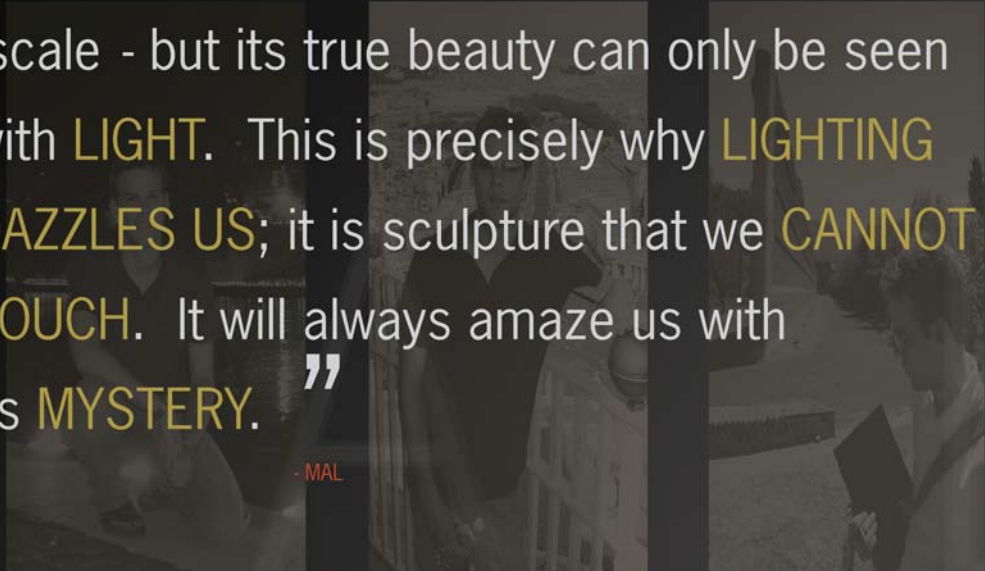
# PROFILE



M.A. Lombardi  
Penn State University  
B.A.E. 2007

“  
ARCHITECTURE is in every sense of the  
word SCULPTURE on a working, human  
scale - but its true beauty can only be seen  
with LIGHT. This is precisely why LIGHTING  
DAZZLES US; it is sculpture that we CANNOT  
TOUCH. It will always amaze us with  
its MYSTERY.”

- MAL



# RENDERINGS



Fireplace rendering. The design and presentation of three fireplaces oriented around a central core was the theme of this house.

AE444 5.2005

**Viz** demonstration of daylight. Sun from the kitchen nook is casting shadows and highlights onto the counter surface. AE444. 5.2005



# RENDERINGS

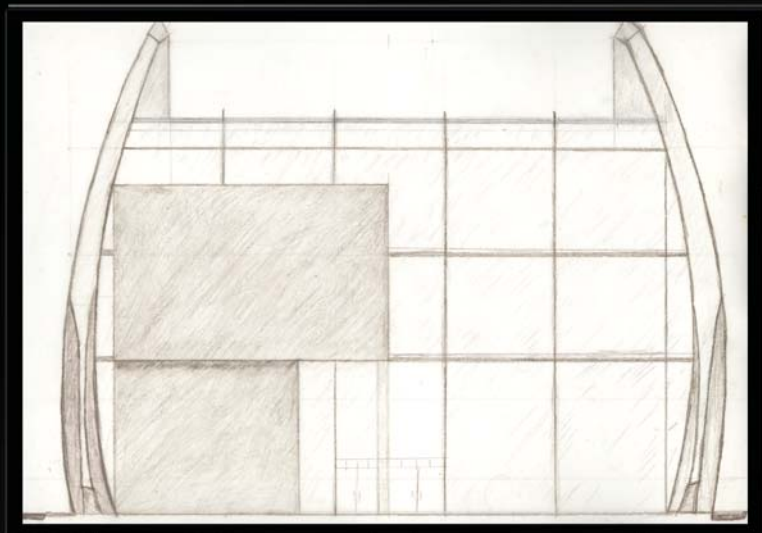


**Viz** exterior renderings depicting the overall appearance of the design.

AE 444. 5.2005



# DESIGN

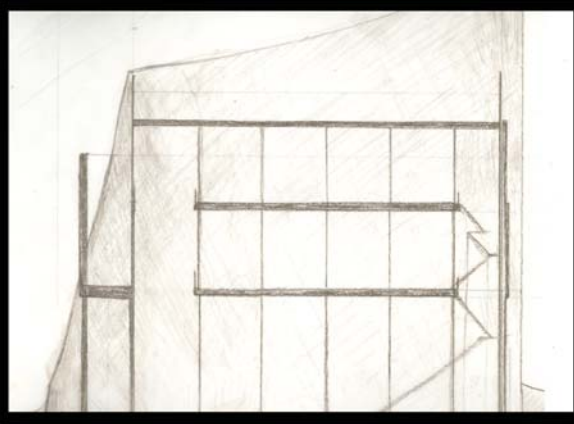


## Il museo dell'isola Tiberina.

Objective: design a museum for isola Tiberina, the only island on the Tiber River in Roma. This famous island holds a unique church. Additionally, the island is believed to cure the sick, and appropriately has a hospital where many come to give birth to their children. The entire island is crafted to look like a ship.

The museum had to hold space for artifacts and respond to the ancient history around it. My design, although modern, mimics the stern of a boat, emphasizing the ship-like characteristics of the other buildings on the island. A modern design was chosen to not confuse ancient from new when visitors arrive.

Roma, Italia  
7.2005

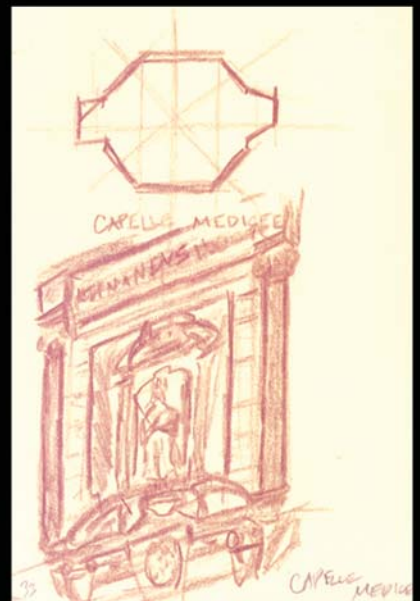


# SKETCHES

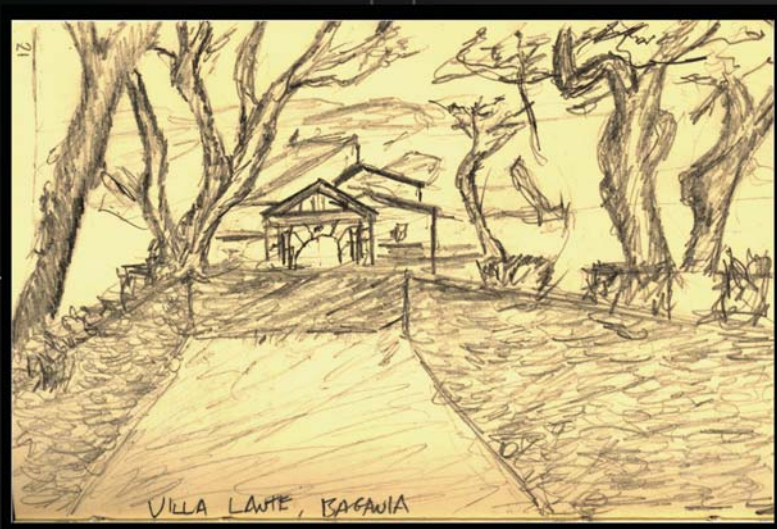


Villa Borghese  
Roma, Italia  
6.2005

Capella Medice  
Firenze, Italia  
6.2005



# SKETCHES



Roma, Italia  
Villa Lante, Bagania  
6.2005

# SKETCHES



Firenze, Italia  
6.2005

Basilica di S. Lorenzo e della Sagrestia  
Firenze, Italia  
6.2005





# SKETCHES



Brief sketches  
Firenze, Italia  
6.2005



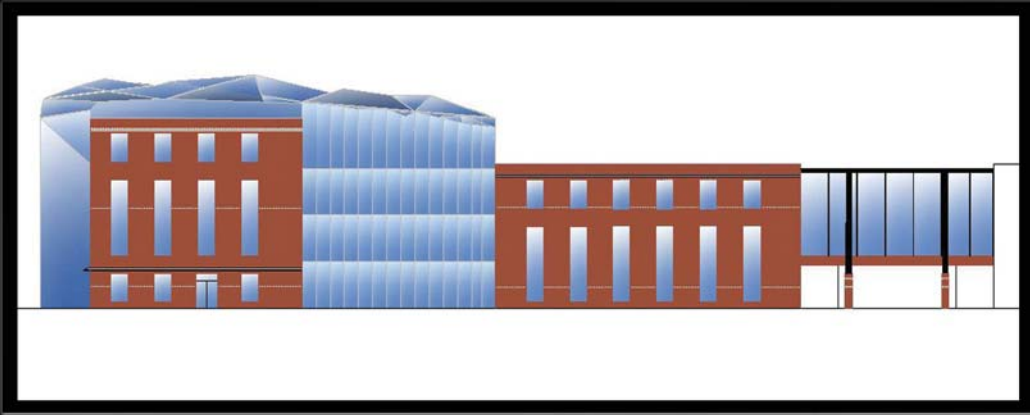
# SKETCHES

Left: Housing project  
Venezia, Italia

Below: Villa Adriana  
Roma, Italia  
6.2005

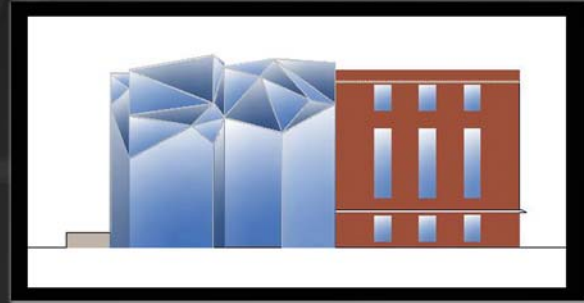
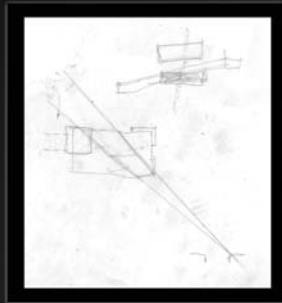
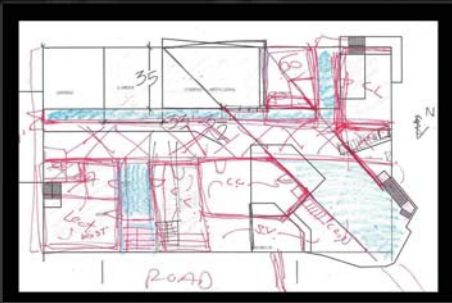


# DESIGN



**E**levations from ARCH130a building concept. An intriguing glass atrium was designed to conflict with the traditional red facade so famous at Penn State, while ironically helping to preserve visibility of the most traditional building at the university - the University House.

4.2004



# ILLUMINANCE STUDY



## PSEUDO IMAGES

These images were created using a digital camera, illuminance meter, and MAC/PC. 14 images were captured at different shutter speeds and then compiled into a single .hdr image using "photosphere" on a mac. The .hdr images were then adjusted on a PC and converted into .fal pseudo images (cd/m<sup>2</sup>). Using known reflectances, illuminance levels were measured from the pseudo images.

AE 461  
12.2005

# FLYNN MODE STUDY

NO LIGHTING



HAZY & QUIET



VISUALLY CLEAR



SPACIOUS



POSITIVE AND  
RELAXED



CONFINED

Photoshop images to demonstrate the unique psychological environments, as defined by the late Dr. Flynn, that can be created through various applications of light.

5.2005

# IES COMPETITION

## DESIGN WITH LIGHT 2005 - 2006

IES PHILADELPHIA

### HONORABLE MENTION

Presentation board submittal for the 2005-2006 IES Philadelphia chapter "Design with Light" contest.

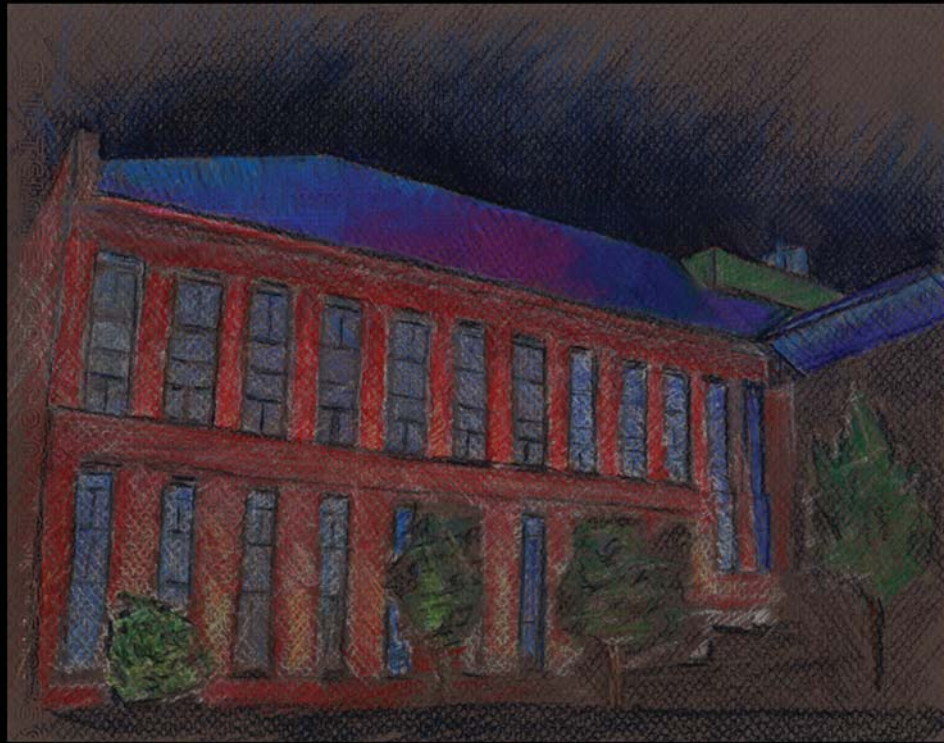
03.2006



Guests are lured into a fiery vestibule of warm walls with the night stars above their heads. Guided by their host through the restaurant, they are seated and enveloped by the cool and intriguing surroundings of the space.



# LIGHTING SKETCHES



**L**ighting concept for Chemistry Building, Penn State University. This building requires 100% outdoor air enormous mechanical systems.

The large mechanical equipment, housed on the roof of the structure, is shielded by a metal and composite 'roof'. The enclosure could be illuminated at night in various color schemes to match with university events.

5.2005

# LIGHTING SKETCHES



## CAPITOLINA

**C**apitolina (capital line hill).  
This sketch includes the famous roman arch and capital line hill ruins in the background

AE 461  
11.2005



# PHOTOSHOP RENDERINGS

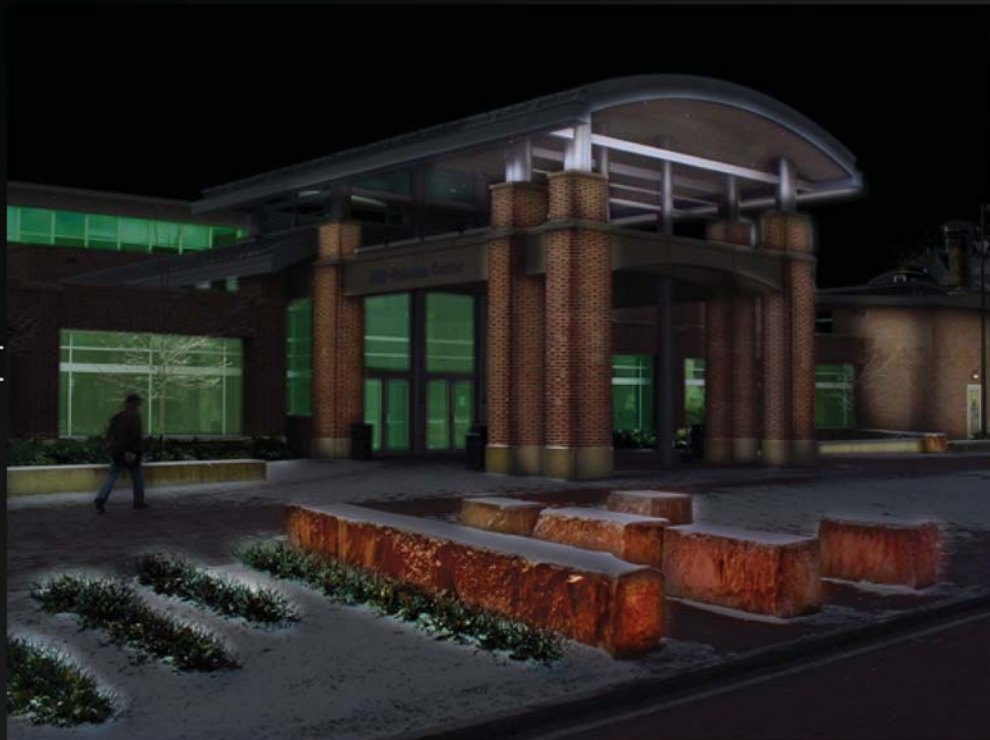


## CONCEPT LIGHTING

Lighting concept for plaza entrance to the Hetzel Union Building, Penn State University.

02.2006

# PHOTOSHOP RENDERINGS



## CONCEPT LIGHTING

Lighting concept for plaza entrance to the Hetzel Union Building, Penn State University.

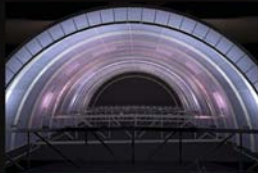
02.2006

# BRANDSTON COMPETITION

## 2006 WINNER

Recipient of the 2006 Howard Brandston Student Lighting Design Education Grant. Image of submitted board.

06.2006



PURE EXHILARATION. LEDs illuminate the frosted glass of the arched skylight.



When busy streets  
a mess with  
people  
Would stop to hold  
their hands  
heavy



## BUSY STREETS

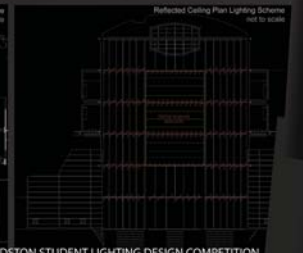
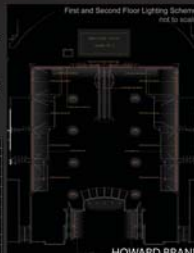


The blue sky sheds light onto the people below; They smile. They laugh. They hold hands.

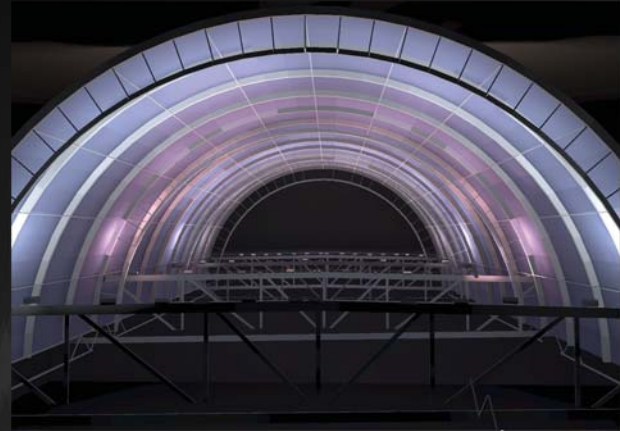


The vibrant blue glass is illuminated by LEDs and forms a backdrop for the warm marquee.

Item	Qty	Unit	Notes
1	1	ft	LED strip
2	1	ft	LED strip
3	1	ft	LED strip
4	1	ft	LED strip
5	1	ft	LED strip
6	1	ft	LED strip
7	1	ft	LED strip
8	1	ft	LED strip
9	1	ft	LED strip
10	1	ft	LED strip
11	1	ft	LED strip
12	1	ft	LED strip
13	1	ft	LED strip
14	1	ft	LED strip
15	1	ft	LED strip
16	1	ft	LED strip
17	1	ft	LED strip
18	1	ft	LED strip
19	1	ft	LED strip
20	1	ft	LED strip
21	1	ft	LED strip
22	1	ft	LED strip
23	1	ft	LED strip
24	1	ft	LED strip
25	1	ft	LED strip
26	1	ft	LED strip
27	1	ft	LED strip
28	1	ft	LED strip
29	1	ft	LED strip
30	1	ft	LED strip
31	1	ft	LED strip
32	1	ft	LED strip
33	1	ft	LED strip
34	1	ft	LED strip
35	1	ft	LED strip
36	1	ft	LED strip
37	1	ft	LED strip
38	1	ft	LED strip
39	1	ft	LED strip
40	1	ft	LED strip
41	1	ft	LED strip
42	1	ft	LED strip
43	1	ft	LED strip
44	1	ft	LED strip
45	1	ft	LED strip
46	1	ft	LED strip
47	1	ft	LED strip
48	1	ft	LED strip
49	1	ft	LED strip
50	1	ft	LED strip
51	1	ft	LED strip
52	1	ft	LED strip
53	1	ft	LED strip
54	1	ft	LED strip
55	1	ft	LED strip
56	1	ft	LED strip
57	1	ft	LED strip
58	1	ft	LED strip
59	1	ft	LED strip
60	1	ft	LED strip
61	1	ft	LED strip
62	1	ft	LED strip
63	1	ft	LED strip
64	1	ft	LED strip
65	1	ft	LED strip
66	1	ft	LED strip
67	1	ft	LED strip
68	1	ft	LED strip
69	1	ft	LED strip
70	1	ft	LED strip
71	1	ft	LED strip
72	1	ft	LED strip
73	1	ft	LED strip
74	1	ft	LED strip
75	1	ft	LED strip
76	1	ft	LED strip
77	1	ft	LED strip
78	1	ft	LED strip
79	1	ft	LED strip
80	1	ft	LED strip
81	1	ft	LED strip
82	1	ft	LED strip
83	1	ft	LED strip
84	1	ft	LED strip
85	1	ft	LED strip
86	1	ft	LED strip
87	1	ft	LED strip
88	1	ft	LED strip
89	1	ft	LED strip
90	1	ft	LED strip
91	1	ft	LED strip
92	1	ft	LED strip
93	1	ft	LED strip
94	1	ft	LED strip
95	1	ft	LED strip
96	1	ft	LED strip
97	1	ft	LED strip
98	1	ft	LED strip
99	1	ft	LED strip
100	1	ft	LED strip



# BRANDSTON COMPETITION



## RENDERINGS

Photoshop rendering of marquee design (left)

Agi32 cad rendering of skylight design with color changing LED

# LIGHTING SKETCHES



## IL PANTHEON

Lighting concept sketch for the Pantheon, Roma, Italia. Cooler color temperatures are applied to the columns and entablature, while a warmer tone is used behind the columns creating a feeling that there is a glow coming from within.

AE 461  
11.2005